



LAKE SUPERIOR STATE UNIVERSITY CHARTER SCHOOLS

FROM THE TOP

July 2020 Issue

Dear Academy Board Members and Leadership Teams,

You did it! Most of you have now completed the 2019-20 academic year. It has taken a great deal of grit, thinking outside of the box, innovation, and dedication to ensure your student not only met academic requirements but that their social emotional needs were also considered during this unprecedented time. On behalf of all of the families you serve, as well as Lake Superior State University, THANK YOU.

The “Return to Learn” (MI Safe Schools Roadmap) recommendations were released on June 30, 2020 and outline the requirements and recommendations for the 2020-2021 school year. The upcoming academic year, will once again require you to be the super heroes you are and rise to the challenge of educating students utilizing a new platform. I have all the confidence that you will do so beautifully. Charters are known for the use of innovative and creative strategies by creative, passionate educators. Please check out more details on page 4 of the newsletter and please contact us if we can be of assistance.

Sincerely,

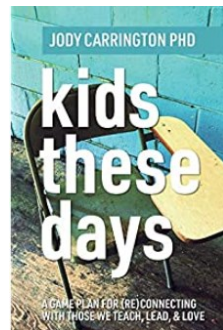
Chris Oshelski
Executive Director
coshelski@lssu.edu

“I think it’s time we did a better job of looking after our educators. They hold our babies more often than we do in the run of the school week.” Dr. Jody Carrington

BOOK CLUB FUN

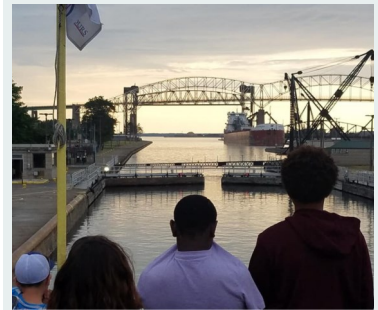
We are excited to announce a new opportunity. Beginning in July, LSSU CSO will offer our first ever book club. Participants will have the opportunity to engage in meaningful dialogue while earning SCECH’s. Our first read will be “Kids These Days” by Dr. Jody Carrington.

Who is Dr. Jody Carrington? Self described as a speaker, author, and game changer, Carrington is a clinical psychologist who has spent much of her life working with children and families that have experienced trauma. Her no nonsense approach is refreshing, informative, and even entertaining.



Our first book study will begin the week of July 6th and run through July 31st. Participants will earn 8 SCECH’S by reading the appropriate chapters and participating in weekly virtual discussions (via ZOOM) to expand on book themes, content, as well as expand on classroom/academy application. Participants are responsible for purchasing their own book.

For more information, please contact Brooke Maciag, School Support Specialist, at bmaciag@lssu.edu or register at <https://docs.google.com/forms/d/e/1FAIpQLSeAiGa4govqmcOdY1KdoFIR73RRbdIfKFXjSPL3oqmmnlNcVpA/viewform>



IN THIS ISSUE

- Book Club Fun-----cover
- Equality for All-----2
- Fall Testing-----2
- Meet your CSO Staff-----3
- Wedding Bells-----3
- Learning Back Packs-----4
- Brooke’s Corner-----4
- Return to Learn-----5

Plus finance & compliance updates!





EQUALITY FOR ALL

LSSU CSO wanted to take a moment to comment on our stance regarding the “Black Lives Matter” movement. We believe in equality for all, pure and simple and will continue to strive to meet the needs of all students that attend academies authorized by Lake Superior State University. We serve children of all colors, ethnicities, and socioeconomic backgrounds. Diversity is what makes the world a beautiful place ! We will continue to provide pertinent and necessary support and training to our academies so that they are able to meet the needs of all learners. Our mission is to, “To ensure quality oversight and support to our authorized charter academies resulting in students who are prepared for the next phase of life whether it be attending college, entering the workforce, or joining the military.”

“A relationship with the ones you are trying to teach, lead, or love is where all the power lies.”
-Dr. Jody Carrington-

FINANCE UPDATE

Happy New Fiscal Year!

Upcoming Important Dates

- ◆ August 14th, 2020
4th Quarter Financial Statements
- ◆ September 30th, 2020
1st Quarter Budget Amendment

FALL TESTING

The MDE is providing the fall 2020 administration of the SAT with Essay for students entering the 12th grade, the PSAT NMSQT (same assessment as PSAT 10 and the PSAT 8/9 for students entering 9th grade in fall 2020). The results of these assessments will not be used for accountability purposes but rather give students an opportunity to the assessments since the April 2020 administration was cancelled due to CO-VID 19 pandemic. All schools that were expected to administer the assessments in the spring 2020 are expected to participate in the assessment in the fall 2020. Materials are to be ordered directly through the College Board website. More information can be found at, https://www.michigan.gov/mde/0,4615,7-140-22709_86724---,00.html

Fall vs. Spring

- * Due to the nature of fall testing and the fact that results will not be used for accountability, the typical MDE requirements for spring testing will not occur in fall.
- * For a full list of differences between fall and spring testing, visit www.michigan.gov/mde or www.michigan.gov/psat
- * Key differences of systems being used include:

	Fall 2020	Spring 2021
OEAA Secure Site	Will not be used	Required: • Verify establishment for testing • Pre-ID students • Additional material order window • Answer document verification
Educational Entity Master (EEM)	Will not be used	Required: • Identify test staff and school address
College Board Testing Ordering Site (TOS)	Required: • Identify test staff and verify school address • Order standard and accommodated test materials • Tracking information	Will not be used
SSD Online	Required: • SAT with Essay • PSAT/NMSQT	Required: • SAT with Essay • PSAT 10 • PSAT 8/9

- * Schools have the option of choosing a primary test day in September or October.

	September 2020	October 2020
Primary Test Date	September 23	October 14
Accommodated Testing Window	September 23 – October 6	October 14 – October 27
Makeup Test Date	October 28	October 28

- * Public and nonpublic schools are eligible to participate in the fall administrations if they were established to participate in the SAT with Essay in Spring 2020.
- * Students must be in 12th grade to participate.
- * The Essay is required.
- * This is a paper/pencil assessment.
- * Test books must be returned after testing.

MEET YOUR CHARTER SCHOOL STAFF

Name: **Julie Hopper**

Position: **Academic Assessment Specialist**

Hometown: **Sault Ste. Marie, Michigan**

Family: **Fiancé-Larry, Sons-Jake & Sam, Daughter-Sydney, Step-sons-Justin & Preston**

Pets: **I have three dogs; Poa, Poppy Lou, and Patagonia**

Hobbies: **Beach Glass Jewelry and Pebble Art**

Little Known Fact: **#1 I am an Adverse Childhood Experiences trainer for Michigan
#2 I like to play jokes on people and have gone to great lengths to do so.**



CONGRATULATIONS ARE IN ORDER!

The last several months have been a whirlwind for our student worker, Miss Natalie Fenchel. Natalie graduated from Grand Traverse Academy (authorized by LSSU) before attending LSSU. In May 2020, Natalie not only graduated with her nursing degree from LSSU but also got married despite the CO-VID pandemic. Natalie and Sam Eckola were married on June 13th, 2020. Brooke and I had the opportunity to celebrate this joyous occasion. We will miss you, Natalie, so very much and are proud of all that you have accomplished. Best wishes to you and Sam.



COMPLIANCE UPDATE

2020-21

Board training by AirWin
Educational Services

*specific dates to come

September: Owning your Governance Role During Change

October: Owning your Budget During Change

November: Owning Student Learning During Change

January: Owning the Future During Change

March/April: Owning Board Culture During Change

Please look for a new Master Calendar on LSSU Charter School's Website to help plan for submissions for 2020-21. (Epicenter/MDE/CEPI)

FROM THE FIELD

- ◆ The Governor has extended the deadline for allowing academy boards to meet virtually through July 30, 2020

Combat CO-VID Tips

- ◆ Do wear a mask
- ◆ Do wash your hands frequently
- ◆ Do practice social distancing
- ◆ Learn a new hobby, catch up on a book, or partake in another activity you've always wanted to try
- ◆ Do take care of your mental and physical health by:

*Exercising

*Getting plenty of sleep

*Eating a healthy diet

*Practicing relaxation techniques, stretching

*Staying connected to others (regularly/virtually)

WELL SAID

“Although the world is full of suffering, it is also full of the overcoming of it.”

Helen Keller

“What sunshine is to flowers, smiles are to humanity...The good they do is inconceivable.”

Joseph Addison

“We do not need magic to change the world, we carry all the power we need inside ourselves already: we have the power to imagine better.”

J.K. Rowling

“To get up each morning with the resolve to be happy is to set our own conditions to the events of each day.”

Ralph Waldo Emerson

“The most wasted of days is one without laughter.”

E.E. Cummings

“Your attitude, not your aptitude will determine your altitude.”

Zig Ziglar

Quotes taken from:

<https://www.goodnewsnetwork.org/category/quote-of-the-day/>



LEARNING BACKPACKS

The American International Academy District serves lower elementary students in Westland, upper elementary students in Inkster, and middle school/high school in Inkster. We have implemented a new program that supports all of our students during the CO-VID pandemic.

The AIA Learning Backpack Program is an effort to create alternative learning opportunities for our children to have access to learning materials that are not just appealing but student and parent friendly. The resource includes an AIA backpack with learning materials such as workbooks, leveled readers, manipulative, STEM Projects, flashcards, writing tools, crayons, and PBIS student engagement gifts to keep students going.

This initiative puts resources that our students would otherwise not have during the summer to help bridge summer learning gaps. We will continue to ZOOM access and learning of these materials to ensure cohesiveness and learning for our parents and reduce frustration.

Submitted by,

LaToya Williams
Curriculum Director



BROOKE'S BLURB

A wise friend told me the other day, “Blessed are the flexible for they will not break.” I feel like this could not be more true as we head into this upcoming school year. As we strive to provide you with quality support, we here at LSSU CSO are keeping flexibility as our theme in regards to professional development this year. Currently we are exploring options for online PD platforms that will allow us to continue to offer highly engaging real time professional development, now at a distance, as well as on demand sessions that will be available for your convenience. Each of these formats will allow you to earn SCECH's toward certificate renewal. As always, we are keeping in mind that teachers do not go into education for the giant paychecks. We are striving to keep participant fees to a minimum, if not free. Once we have locked in a platform, we will be making an announcement as to the offerings and access. Additionally, if your district has specific needs for support, please do not hesitate to reach out to either me at bmaciag@lssu.edu or Julie Hopper at jhopper@lssu.edu.

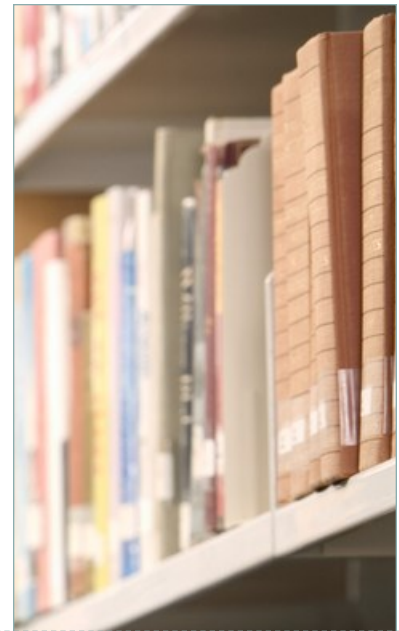
CPI CERTIFICATION AND RENEWALS

First off, I want to thank each one of you reading this for the work you do with and on behalf of children. This is a hard job and often it can seem thankless, but please know you are so very much appreciated. Sometimes our hardest kiddos to love are the ones that need it the most, and I am thankful that you get up and commit to do this work every day. As a trainer for Nonviolent Crisis Prevention Intervention, I know the importance of relationships with your students. I have certified many of you within our academies over the past years, and you may be wondering what the plan is for renewal. For those individuals who I have certified in the past, there is an online renewal program available to you that covers the bookwork and we can set up a video conference to review the physical disengagements and restraint. For new certifications, I will be offering courses that do NOT include physical restraint. At this time, and in light of recent events, I do not feel as though I can provide you with a proper support through distance learning to thoroughly cover this portion. With that being said, if you or your district are interested in the virtual renewal or new certification options, please have your school leader reach out to me soon to set up options. Stay safe, stay healthy, stay sane.

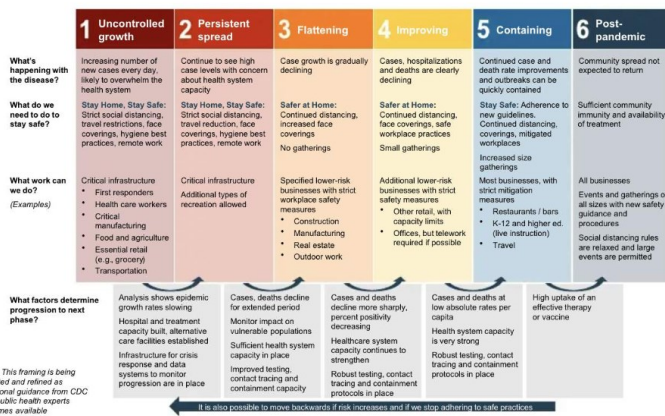
Brooke

RETURN TO LEARN UPDATE

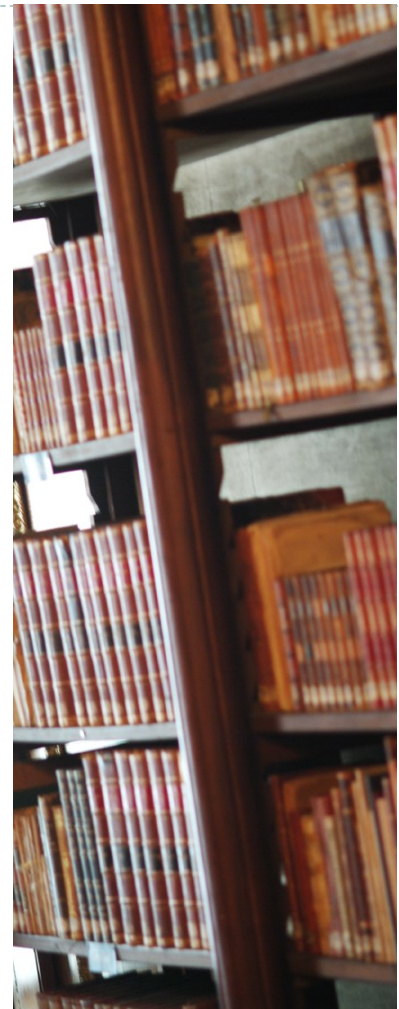
On June 30, 2020, Governor Whitmer released the MI Safe Schools Roadmap Recommendations which is the result of a joint effort between the Return to Learn Advisory Council and a Task Force of experts from across state government. The Council was made up of a group of twenty five individuals including teachers, parents, principals, special education professionals, counselors, professionals from both the mental health and public health sectors, pediatricians, and even a K-12 student representative. The Roadmap should be used to understand what safety protocols must be implemented and to develop detailed district and building level plans for how to implement the required safety protocols described in the Roadmap. Keep in mind that **required** protocols must be implemented by all Michigan schools that serve students in grades K-12. Implementation of these protocols will minimize the risk of exposure to CO-VID 19. Other protocols that are recommended are optional and all schools may choose to implement these safety protocols and actions. The Roadmap is based on Governor Whitmer's six stage CO-VID model. See below. Schools and areas may shift from one phase to the next therefore will be required to develop three detailed plans on how they will meet the requirements in each phase. Schools will submit a plan for Phases 1-3, Phase 4, and Phase 5. Schools in Phase 4 or 5 Regions may return to face to face instruction. For more information, please visit: https://www.michigan.gov/documents/whitmer/MI_Safe_Schools_Roadmap_FINAL_695392_7.pdf https://www.michigan.gov/whitmer/0,9309,7-387-90499_90705-524032--,00.html



“We will continue to put safety first, leveraging science, data, and public health evidence to inform the decision we make to serve each and every student in Michigan well.” Governor Whitmer



Whitmer's reopen plan in six phases. (WDIV)



What are school opening scenarios for Fall 2020?

Depending on the status of MI Safe Schools, there are three scenarios for school opening in fall 2020:

1. Schools open for in-person instruction with minimal required safety protocols (MI Safe Start Phase 6).
2. Schools open for in-person instruction with moderate required safety protocols (MI Safe Start Phase 5).
3. Schools open for in-person instruction with more stringent required safety protocols (MI Safe Start Phase 4).
4. Schools do not open for in-person instruction and instruction is provided remotely (MI Safe Start Phases 1-3).

CHARTER SCHOOLS STAFF

Chris Oshelski

Executive Director
coshelski@lssu.edu

Jenny Peterman-

Administrative Assistant
jpeterman@lssu.edu

Julie Hopper

Academic Assessment
jhopper@lssu.edu

Brooke Maciag

School Support Specialist
bmaciag@lssu.edu

John Chandler

Field Representative
jchandler1@lssu.edu

Garnet Green

Field Representative
ggreen3@lssu.edu

Keith Krahnke

Field Representative
kkrahnke1@lssu.edu

Melissa Weisberger

Field Representative
mweisberger@lssu.edu

PHILOSOPHY

We believe in authorizing through the lens of an educator, realizing students are more than academic performance or financial incentives. True authorizing takes into account the whole child, whole academy, and whole community while recognizing the importance of increased performance and sustainability.

MISSION

To ensure quality oversight and support to our authorized charter academies resulting in students who are prepared for the next phase of life whether it be attending college or entering the work force.

VISION

We envision an educational system in Michigan that provides families with diverse educational opportunities that allow each child to flourish and find his/her place in the global community.

OUR VALUES

- EXCELLENCE IN TEACHING
- DIVERSITY
- OPPORTUNITY
- ETHICS AND PRINCIPLES
- ACCOUNTABILITY AND AUTONOMY
- STEWARDSHIP

Lake Superior State University

Charter Schools Office
650 W. Easterday Avenue
Sault Ste. Marie, MI-49783

906-635-2121



LAKE SUPERIOR
STATE UNIVERSITY
CHARTER SCHOOLS